



**India Meteorological Department
(Ministry of Earth Sciences)**

BULLETIN NO. : 05 (BOB/07/2022)

TIME OF ISSUE: 2215 HOURS IST

DATED: 19.08.2022

FROM: INDIA METEOROLOGICAL DEPARTMENT (FAX NO. 24643965/24699216/24623220)

TO: CONTROL ROOM, NDM, MINISTRY OF HOME AFFAIRS (FAX.NO. 23093750)

CONTROL ROOM NDMA (FAX.NO. 26701729)

CABINET SECRETARIAT (FAX.NO.23012284, 23018638)

PS TO HON'BLE MINISTER FOR S & T AND EARTH SCIENCES (FAX NO.23316745)

SECRETARY, MOES (FAX NO. 24629777)

H.Q. (INTEGRATED DEFENCE STAFF AND CDS) (FAX NO. 23005137/23005147)

DIRECTOR GENERAL, DOORDARSHAN (23385843)

DIRECTOR GENERAL, AIR (23421105, 23421219)

PIB MOES (FAX NO. 23389042)

UNI (FAX NO. 23355841)

D.G. NATIONAL DISASTER RESPONSE FORCE (NDRF) (FAX NO. 26105912, 2436 3260)

DIRECTOR, PUNCTUALITY, INDIAN RAILWAYS (FAX NO. 23388503)

ADMINISTRATOR, ANDAMAN & NICOBAR ISLANDS (FAX NO. 03192- 232656)

CHIEF SECRETARY, ODISHA (FAX NO. 0674-2536660)

CHIEF SECRETARY, WEST BENGAL (FAX NO. 033-22144328)

CHIEF SECRETARY, CHATTISGARH (FAX NO.)

CHIEF SECRETARY, JHARKHAND (FAX NO.)

CHIEF SECRETARY, GOVT. OF MADHYA PRADESH (FAX NO. 755-2441076)

CHIEF SECRETARY, GOVT. OF MAHARASHTRA (FAX NO. 022- 22028594)

CHIEF SECRETARY, TAMILNADU (FAX NO. 044-25672304)

CHIEF SECRETARY, ANDHRA PRADESH (FAX NO. 0863-2441029, 08645-246600)

CHIEF SECRETARY, PUDUCHERRY (FAX NO 0413-2334145)

Sub: Deep Depression over coastal areas of West Bengal & adjoining north Odisha

The Deep Depression over Northwest Bay of Bengal moved west-northwestwards during past 03 hours with a speed of 10 kmph and lay centered at 2030 hrs IST of today, the 19th August, 2022 over coastal areas of West Bengal & adjoining north Odisha near latitude 21.8°N and longitude 87.6°E, about 20 km north-northeast of Digha (West Bengal), 180 km south-southeast of Bankura (West Bengal) and 180 km southeast of Jamshedpur (Jharkhand).

It would continue to move west-northwestwards across West Bengal & adjoining north Odisha and Jharkhand towards north Chhattisgarh during next 24 hours and weaken gradually.

Forecast track and intensity are given in the following table:

Date/Time(IST)	Position (Lat. °N/ long. °E)	Maximum sustained surface wind speed (Kmph)	Category of cyclonic disturbance
19.08.22/2030	21.8/87.6	55-65 gusting to 75	Deep Depression
19.08.22/2330	22.0/87.1	55-65 gusting to 75	Deep Depression
20.08.22/0530	22.3/86.2	50-60 gusting to 70	Deep Depression
20.08.22/1130	22.5/85.2	45-55 gusting to 65	Depression
20.08.22/1730	22.7/84.2	40-50 gusting to 60	Depression

Warnings:

Rainfall:

19th August: Rainfall at most places with **heavy to very heavy rainfall at a few places and extremely heavy rainfall at isolated places is very likely over North Odisha and coastal districts of southwest Gangetic West Bengal**. Rainfall at most places is very likely with heavy to very heavy rainfall at a few places over South Odisha & rest parts of Gangetic West Bengal; isolated heavy to very heavy rainfall over Jharkhand & Chattisgarh and heavy rainfall at isolated places over East Madhya Pradesh.

20th August: Rainfall at most places with heavy to very heavy rainfall at a few places and extremely heavy rainfall at isolated places is very likely over North Chattisgarh & East Madhya Pradesh. Rainfall at most places is very likely with heavy to very heavy rainfall at a few places over Northwest Odisha, Jharkhand & Vidarbha. Rainfall at most places with heavy rainfall at isolated places over remaining parts of Odisha, south Chhattisgarh and West Madhya Pradesh.

21st August: Rainfall at most places with heavy to very heavy rainfall at a few places and extremely heavy rainfall at isolated places is very likely over West Madhya Pradesh. Rainfall at most places is very likely with heavy to very heavy rainfall at isolated places over East Madhya Pradesh & East Rajasthan and heavy rainfall at isolated places over Chattisgarh & Vidarbha.

22nd August: Rainfall at most places is very likely with heavy to very heavy rainfall at isolated places over East Rajasthan and heavy rainfall at isolated places over West Madhya Pradesh.

Wind:

- **Squally wind speed reaching 55-65 kmph gusting to 75 kmph** is likely to prevail till midnight of today over North Bay of Bengal and along & off north Odisha (**Balasore, Bhadrak and adjoining Mayurbhanj Districts**) and West Bengal (**North & South 24 Parganas, East & West Medinipur and Jhargram Districts**) coasts.
- It will gradually decrease becoming 45-55 kmph gusting 65 kmph by 20th morning over the same region and 35-45 kmph gusting 55 kmph by evening of 20th August.
- **Squally wind speed reaching 45-55 gusting to 65 kmph** likely along & off remaining districts of coastal Odisha & West Bengal till morning of 20th and decrease thereafter.
- **Strong Winds speed reaching 30-40 kmph gusting to 50 kmph** likely to prevail over interior districts of north Odisha, Gangetic West Bengal and adjoining areas of south Jharkhand from tonight for subsequent 12 hours.

Sea condition:

Sea condition is likely to be rough to very rough over North Bay of Bengal and along & off West Bengal, Odisha & Bangladesh coasts till 20th August noon and improve gradually thereafter.

Fishermen Warnings: (for graphics please visit <https://rsmcnewdelhi.imd.gov.in>)

Fishermen are advised not to venture into North Bay of Bengal and along & off West Bengal, Odisha & Bangladesh coasts till 20th August noon.

Damage expected over North Odisha and Gangetic West Bengal:

- Damage to loose/unsecured structures. Some breaches in Kutcha road & embankments due to flooding.
- Damage to small trees like Banana, Papaya etc. and near coastal agriculture due to salt spray. Damage to standing crops and horticulture.
- Localized Flooding of roads, water logging in low lying areas and closure of underpasses.
- Reduction in visibility due to heavy rainfall.

- Disruption of traffic in major cities due to water logging in roads.
- Localized Landslide/Mudslides.
- It may lead to riverine flooding in some river catchments (for riverine flooding please visit Web page of CWC)

Next message will be issued at 0230 hours IST of tomorrow, the 20th August, 2022.

(Surendra Pratap Singh)
Scientist C, Cyclone Warning Division, New Delhi

**Copy to: ACWC Mumbai/ ACWC Kolkata/ ACWC Chennai/ CWC
Bhubaneswar/CWCVisakhapatnam/ / MO Port Blair/MC Raipur/MC Bhopal/MC
Hyderabad/RMC Nagpur/**

LEGEND: Heavy Rainfall: 64.5 to 115.5mm, **Very Heavy Rainfall:** 115.6 to 204.4mm **Most Places:** more than 76% of total stations, **Isolated Places:** Less than 25% of total

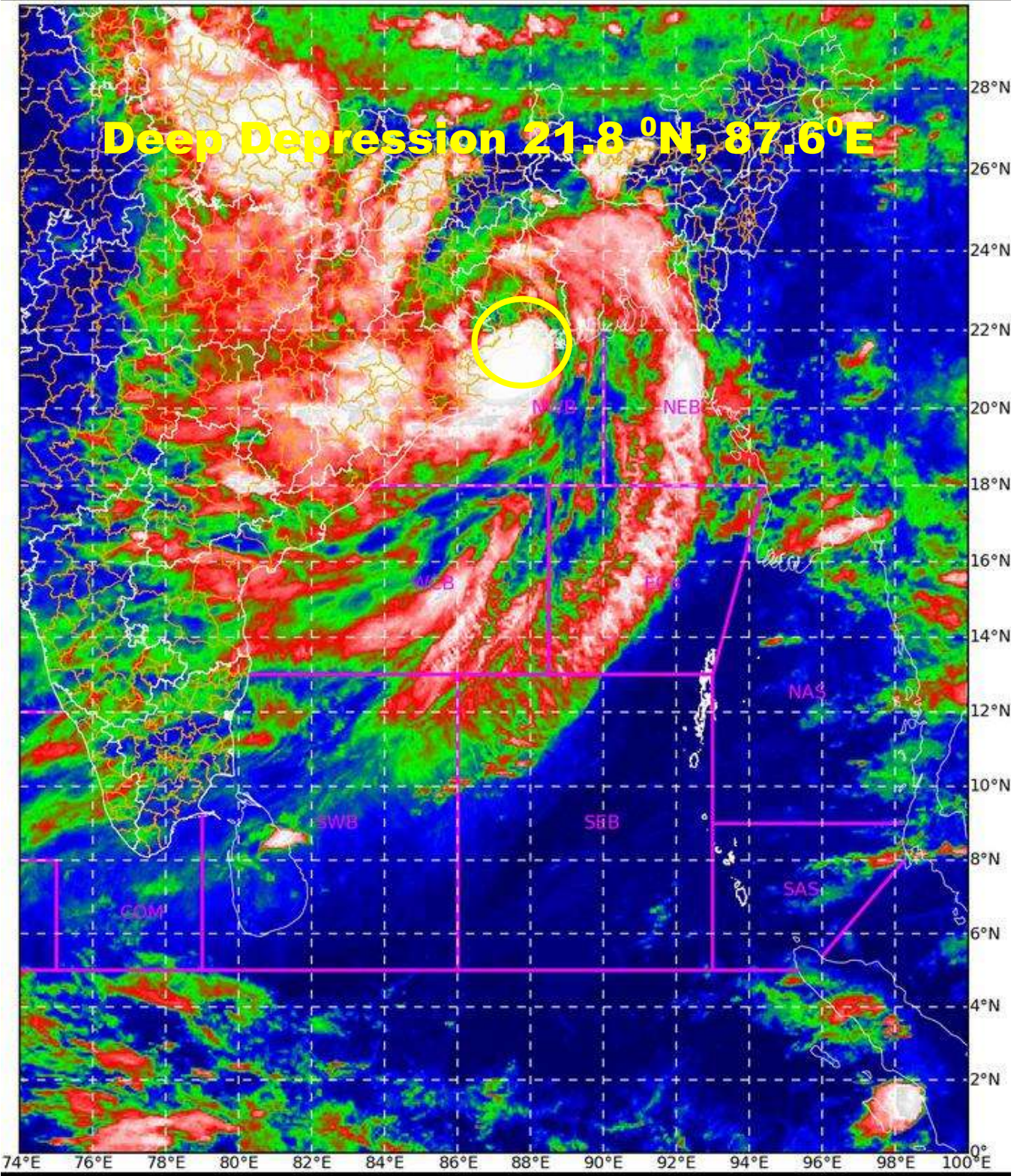
SAT : INSAT-3D IMG

19-08-2022/(1530 to 1556) GMT

IMG_TIR1_TEMP 10.8 um

19-08-2022/(2100 to 2126) IST

L1C Mercator



Deep Depression 21.8 °N, 87.6°E



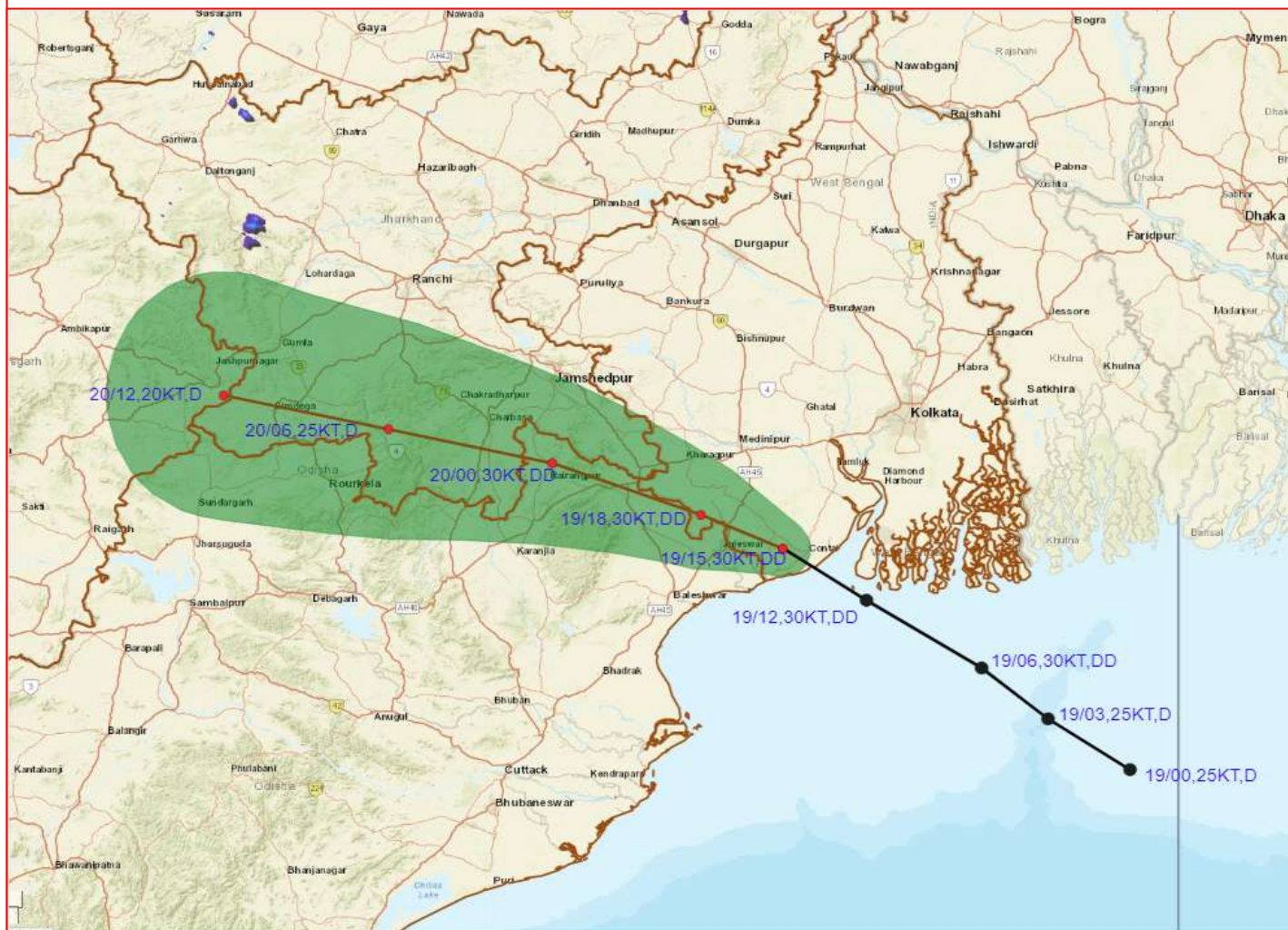
10 -10 -30 -70

Celsius

IMD, DELHI



OBSERVED AND FORECAST TRACK ALONGWITH CONE OF UNCERTAINTY OF DEEP DEPRESSION OVER COASTAL AREA OF WEST BENGAL AND NORTH ODISHA BASED ON 1500 UTC OF 19th AUGUST, 2022



DATE/TIME IN UTC
 IST=UTC + 0530
 L: LOW PRESSURE AREA
 WML: WELL MARKED LOW PRESSURE AREA
 D: DEPRESSION (17-27 KT)
 DD: DEEP DEPRESSION (28-33 KT)
 CS: CYCLONIC STORM (34-47 KT)
 SCS: SEVERE CYCLONIC STORM (48-63KT)
 VSCS: VERY SEVERE CYCLONIC STORM (64-89 KT)
 ESCS: EXTREMELY SEVERE CYCLONIC STORM (90-119 KT)
 SuCS: SUPER CYCLONIC STORM (≥ 120 KT)

- LESS THAN 34 KT
- 34-47 KT
- ≥ 48 KT
- OBSERVED TRACK
- FORECAST TRACK
- CONE OF UNCERTAINTY



OBSERVED AND FORECAST TRACK ALONG WITH QUADRANT WIND DISTRIBUTION OF DEEP DEPRESSION OVER COASTAL AREA OF WEST BENGAL AND NORTH ODISHA BASED ON 1500 UTC OF 19th AUGUST, 2022



DATE/TIME IN UTC

IST=UTC + 0530

L: LOW PRESSURE AREA

WML: WELL MARKED LOW PRESSURE AREA

D: DEPRESSION (17-27 KT)

DD: DEEP DEPRESSION (28-33 KT)

CS: CYCLONIC STORM (34-47 KT)

SCS: SEVERE CYCLONIC STORM (48-63KT)

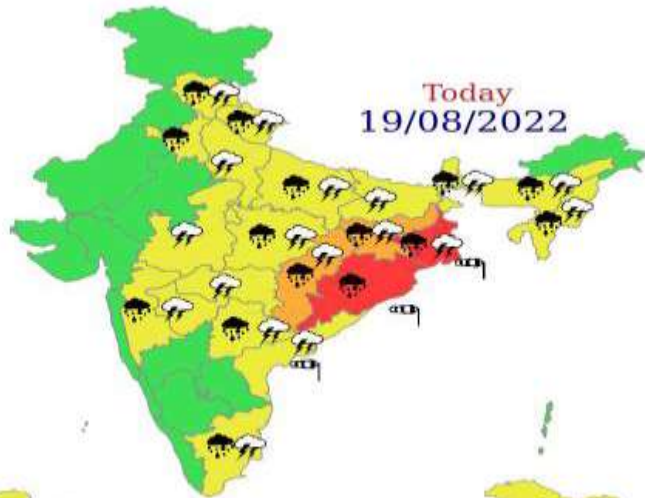
VSCS: VERY SEVERE CYCLONIC STORM (64-89 KT)

ECS: EXTREMELY SEVERE CYCLONIC STORM (90-119 KT)

SuCS: SUPER CYCLONIC STORM (≥ 120 KT)

- LESS THAN 34 KT
- 34-47 KT
- ≥ 48 KT
- OBSERVED TRACK
- FORECAST TRACK
- CONE OF UNCERTAINTY

MSW (knot/kmph)	Impact	Action
28-33 (52-61)	Very rough seas	Total suspension of fishing operations
34-49 (62-91)	High to very high seas	Total suspension of fishing operations
50-63 (92-117)	Very high seas	Total suspension of fishing operations
≥ 64 (≥ 118)	Phenomenal	Total suspension of fishing operations



WARNING

WARNING (TAKE ACTION)

ALERT (BE PREPARED)

WATCH (BE UPDATED)

NO WARNING (NO ACTION)



- | | | | |
|--|--|--|--|
|  Heavy Rain |  Heavy Snow |  Thunderstorm |  Dust Storm |
|  Strong Winds |  Visibility |  Cyclone |  Squall/ Hail |
|  Frost |  Cold Wave |  Heat Wave |  Sea State |

Fishermen warning graphics

Day 1: 19.08.2022/11:30 AM to 20.08.2022/05:30 AM



Day 2: 20.08.2022/05:30 AM to 21.08.2022/05:30 AM



Day 3: 21.08.2022/05:30 AM to 22.08.2022/05:30 AM



Day 4: 22.08.2022/05:30 AM to 23.08.2022/05:30 AM

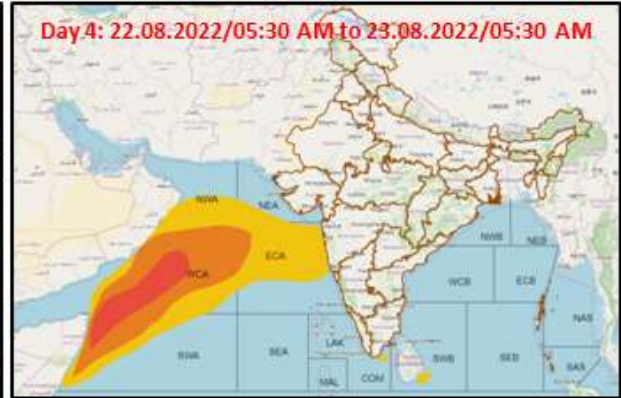
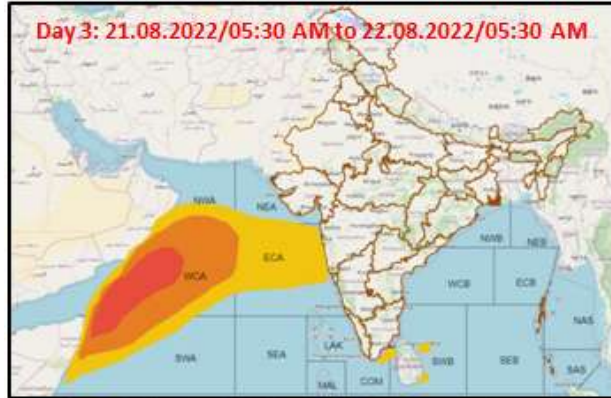
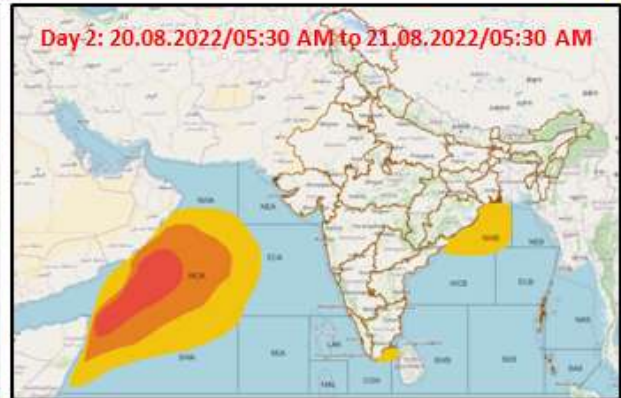
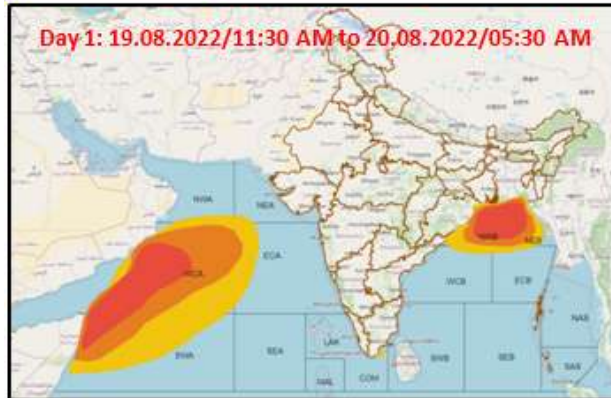


Day 5: 23.08.2022/05:30 AM to 24.08.2022/05:30 AM



	Squally WX with wind speed 40-45 gusting to 55 kmph
	Squally wind speed 40-50 kmph gusting to 60 kmph
	Squally wind speed 45-55 kmph gusting to 65 kmph
	Squally wind speed 55-65 kmph gusting to 75 kmph

Probability of exceedance of maximum sustained winds ≥ 45 kmph



Probability of exceedance	
	Low (1-33%)
	Moderate (34-67%)
	High (68-100%)